



**DI'LUSSO**  
LUXURY  
BATHROOM

# INSTALLATION INSTRUCTIONS

## BASIN/KITCHEN SERIES

The manufacturer reserves the right to change the technical parameters and external characteristics of the product specified in this manual, if these changes do not affect the functionality.

Note: Detailed information is in accordance with the final product.



## For users attention

- Do not disassemble the faucet main body, as it was assembled and fine-tuned to standard before leaving the factory.
- To avoid damage to the faucet, flush the water pipes before installation.
- After installation, make sure each joint safely sealed and does not leak.
- Using conditions: working pressure at 0.5 - 1.0 MPa including cold and hot waterl, the water temperature should be at least 4 'C and not more than 90 °C.
- Make sure the hot and cold water pipes are connected correctly.

## Tool

The tools below are required to complete the installation. Some may not be needed depending on the model of the faucet that you are installing. For additional information, check with your local hardware store on the requirements for your installation. (NOT PROVIDED)



Screwdriver



Thread Seal Tape



Flashlight



Pliers

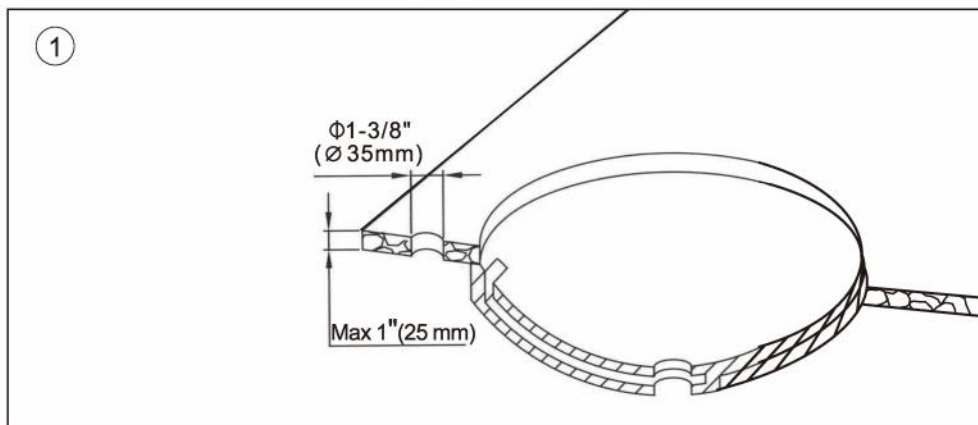
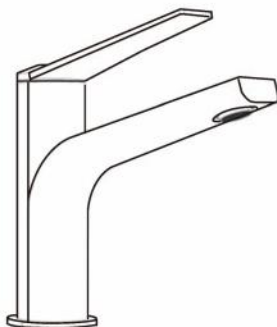


Adjustable Wrench



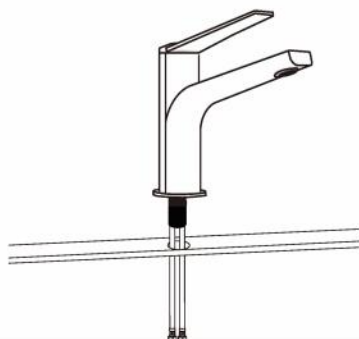
Safety Glasses

## Installation instructions for water basin faucet



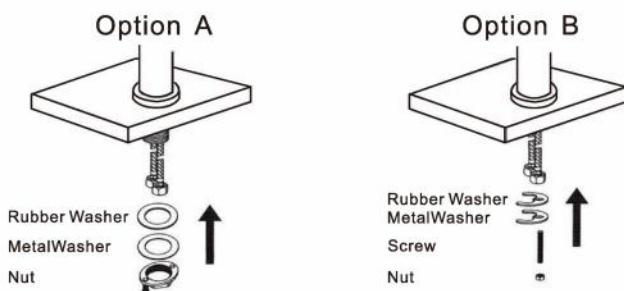
## Installation instructions for water basin faucet

2

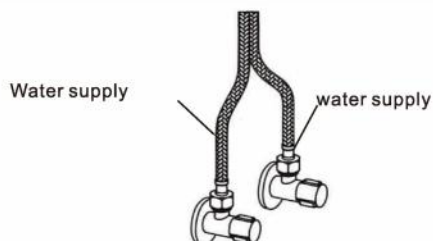


2. install the faucet body and the water supply hoses into the mounting hole.

3



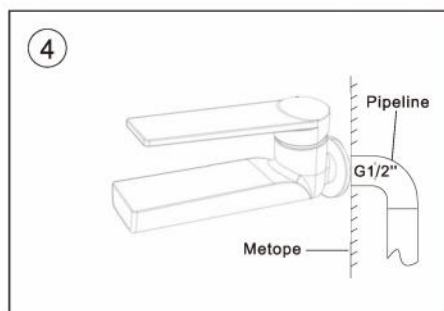
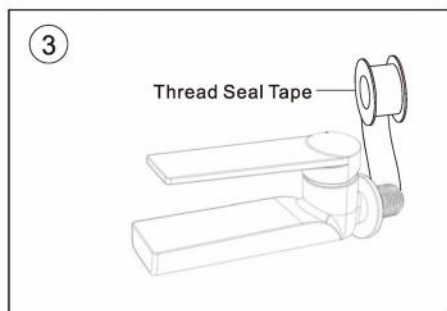
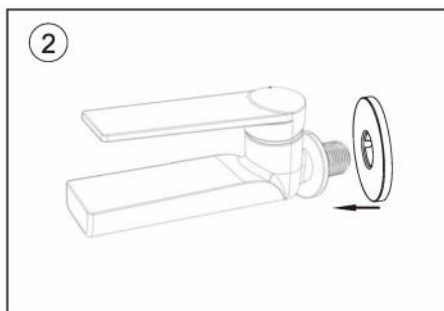
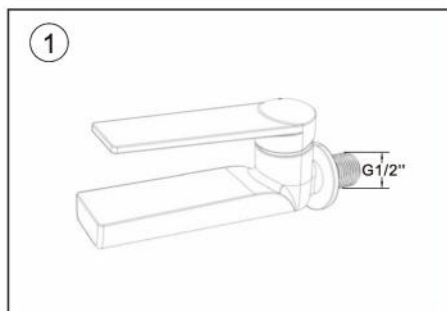
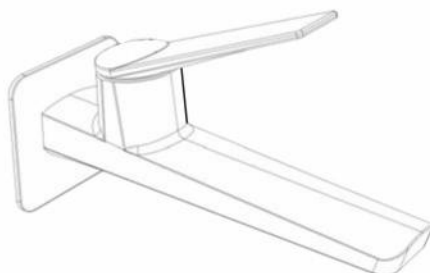
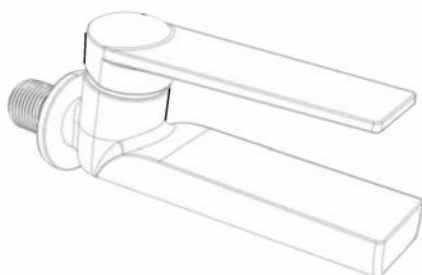
4



3. Insert the accessories in turn as shown.

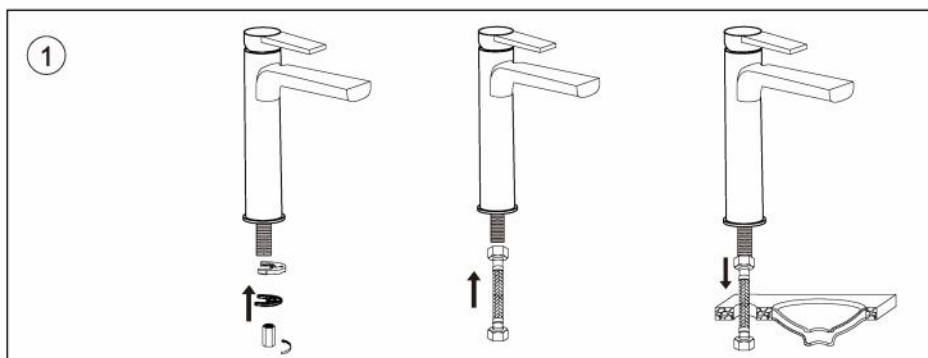
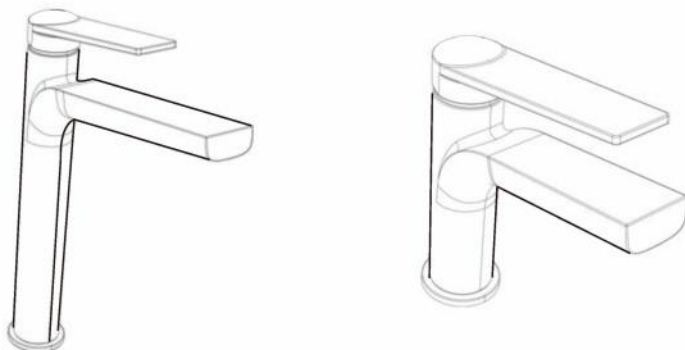
4. Diagram of connecting the water supply pipe.

## Installation instructions for the wall faucet

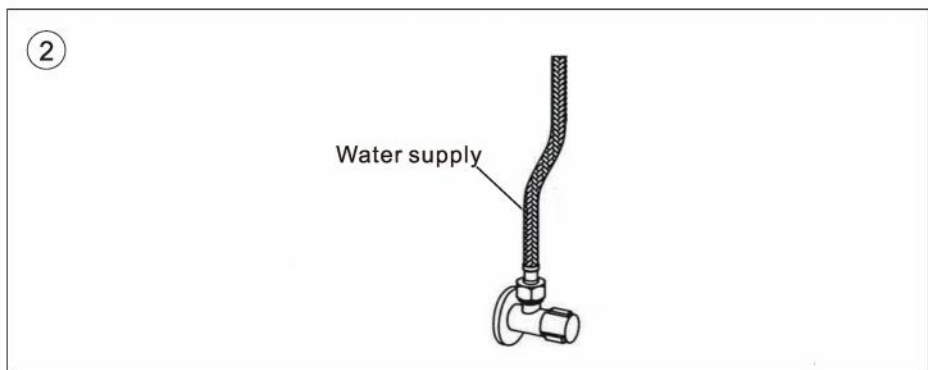


1. The standard interface size is G1/2".
2. Install decorative shims.
3. Wrap sealing tape on top of joint.
4. Mounting into wall.

## Installation instructions for single water basin faucet

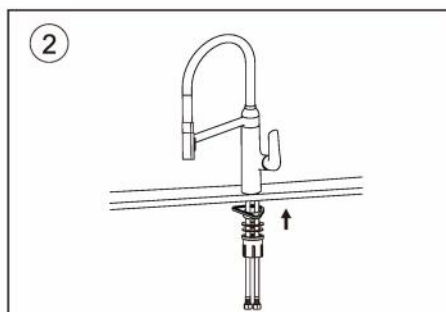
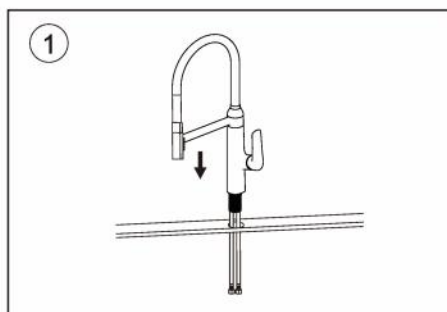
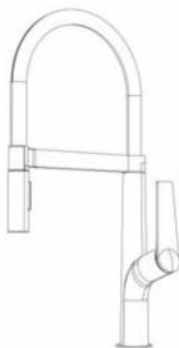


1. Insert the two inlet hoses into the tap. From above the basin, place the inlet hoses and shank-thread through Hole onto the basin. From underneath basin, secure tap body by placing rubber washer metal washer, and threading long nut onto the mounting post make sure that the ribbed edge metal gasket is facing up. Use the install tool to tighten the long nut. secure long nut must exceed 1/4 turn.

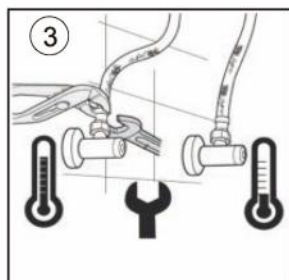
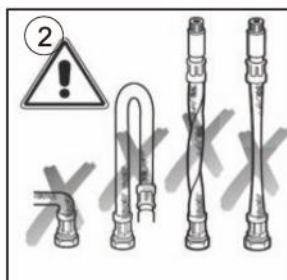


2. Hose is connected to valve.

## Installation instructions for hot and cold kitchen faucets



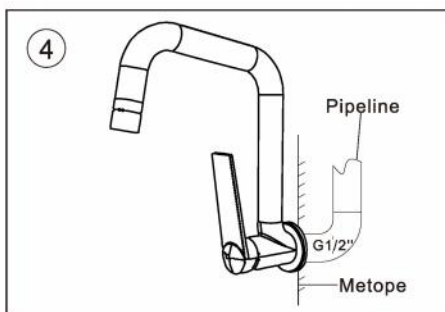
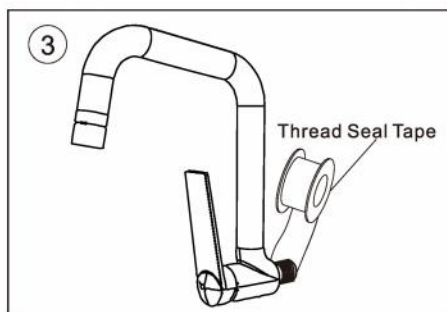
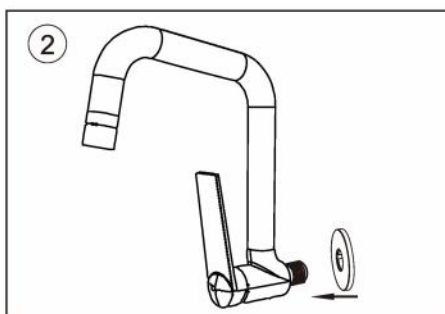
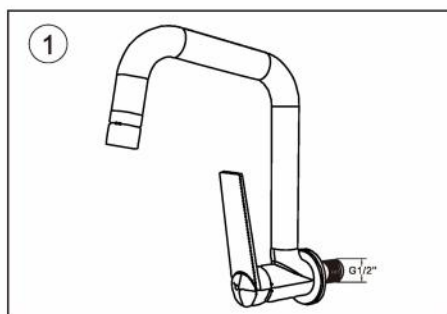
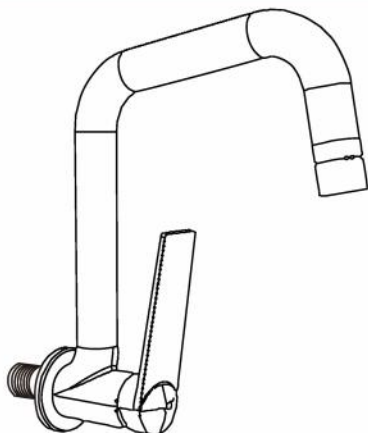
1. Insert the flat gasket into the bottom of the faucet group, then insert the faucet group into the table face.
2. The locking group of the plastic base mesa is tightened on the tooth tube of the main group of the faucet through the inlet and outlet water hose in turn, and then the fixing nut is tightened.



### Considerations

1. Drain the sewage.
2. Do not bend, twist, or stretch the water inlet hose when it is connected. Otherwise, there will be hidden dangers such as water leakage or pipe explosion.
3. When the water inlet hose is connected to the Angle valve, choose two suitable wrenches, one to fix the water inlet hose and the other to rotate the movable nut of the hose to avoid the hose rotating with the nut and distorting; The hot and cold water inlet pipes are respectively connected to the hot and cold water inlet Angle valves.

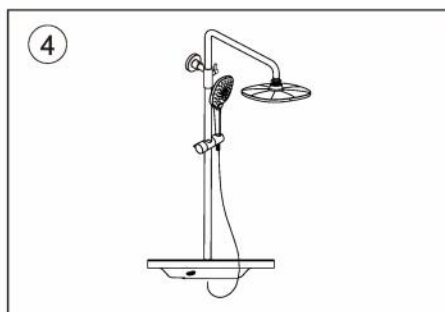
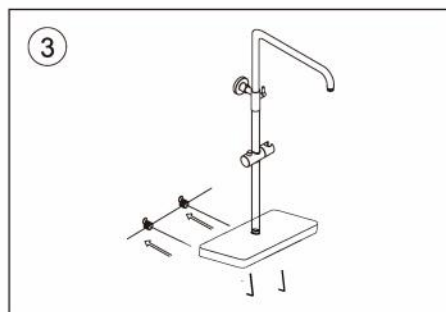
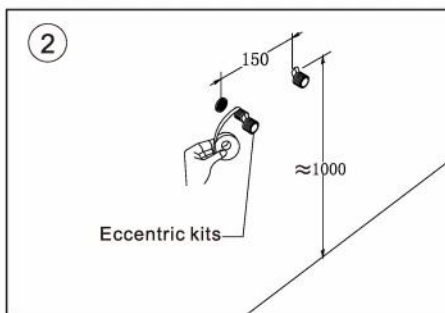
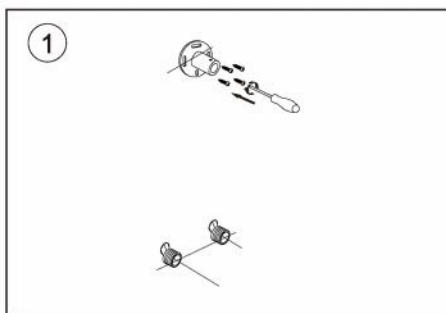
## Installation of kitchen faucets



1. The standard interface size is G12.
2. Install decorative shims.
3. Wrap sealing tape on top of joint.
4. Mounting into wall.

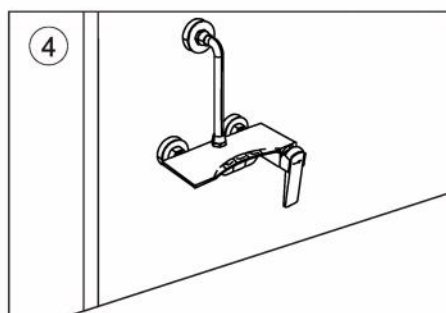
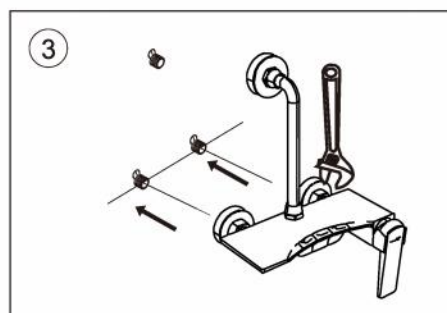
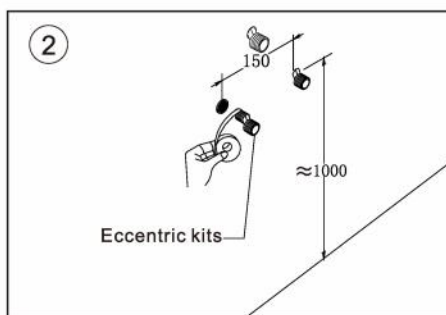
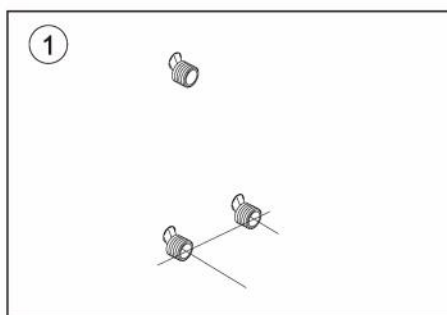
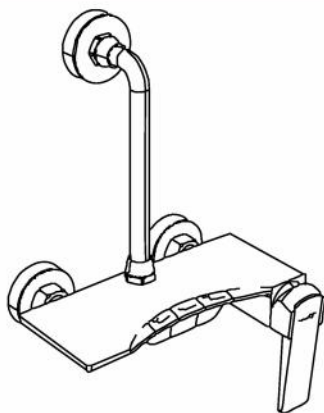


## Shower installation



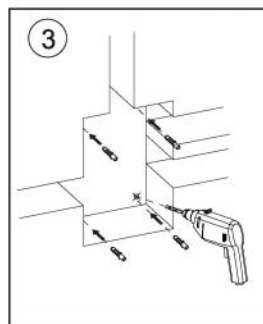
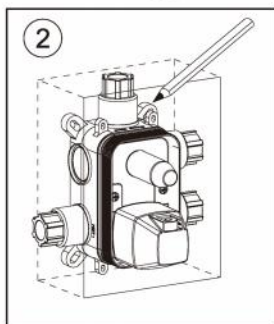
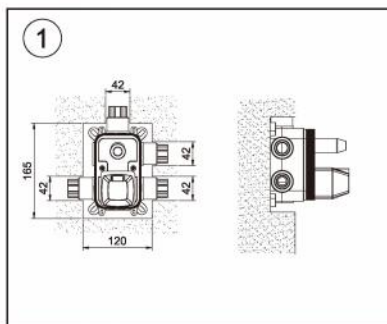
1. According to the size of the shower pipe, the fixing base is fixed on the wall with self-tapping screws.
2. The eccentric kit is wrapped with raw material tape and connected with the buried outlet pipe joint.
3. Connect the main body with the eccentric kits. Use the hexagonal key to lock the two hexagonal screws tightly and ensure that there is no shaking. Fix the shower pipe to the upper wall fixer at the same time.
4. Turn on the water source switch and check whether there is water leakage at each connection.

## Shower installation

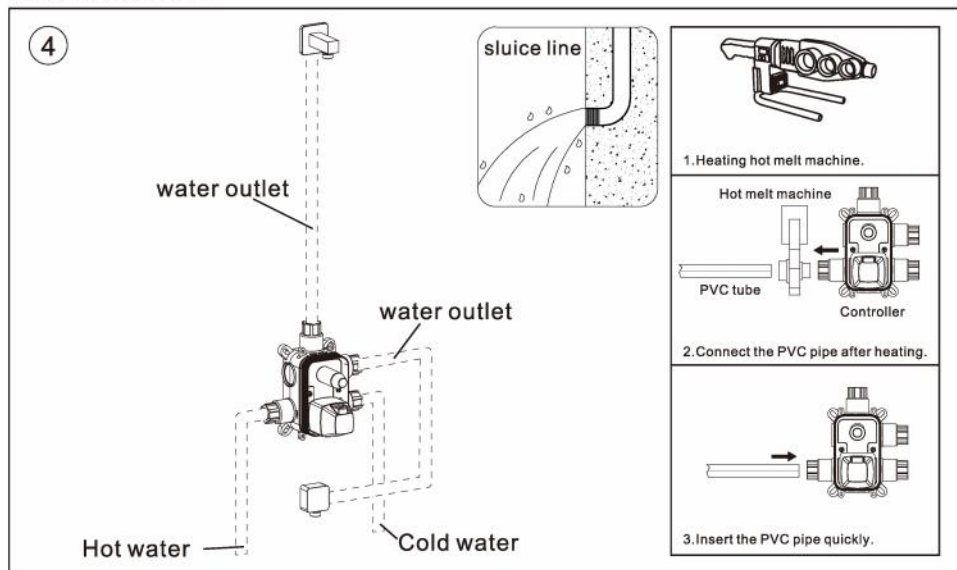


1. According to the size of the shower pipe, the fixing base is fixed on the wall with self-tapping screws.
2. The eccentric kits are wrapped with raw material tape and connected with the buried outlet pipe joint.
3. Shower controller connects Angle valve and tightens nut.
4. The shower controller is done.

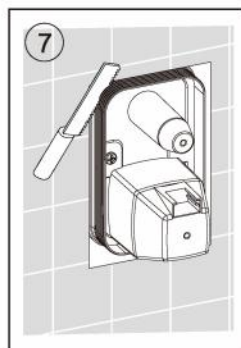
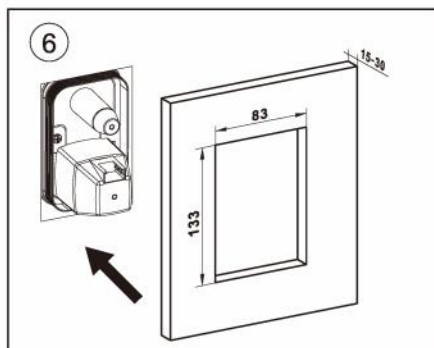
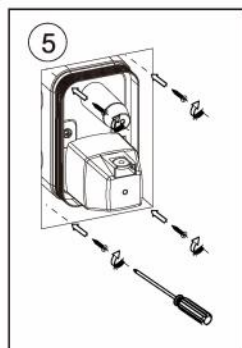
## Shower installation



1. Understand the size of the controller.
2. Mark the screw hole positions on the reserved positions.
3. Punch holes in the wall.



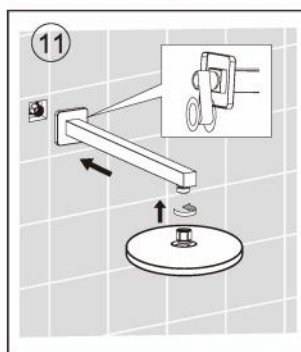
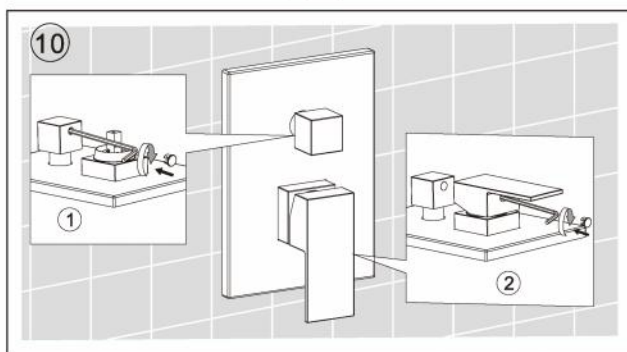
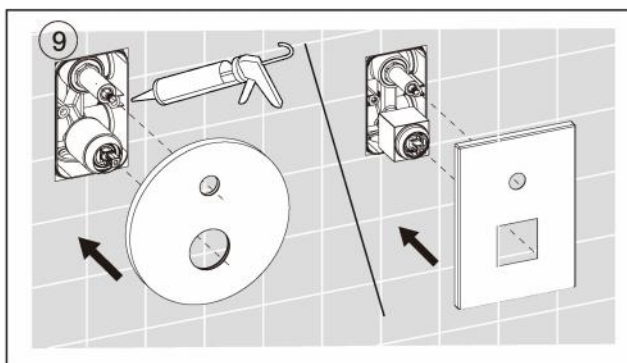
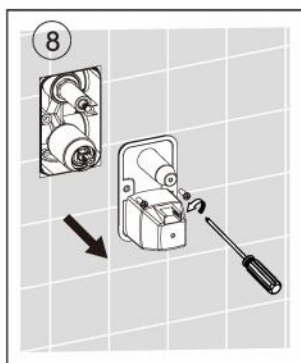
## Diverter installation



5. Secure the controller with screws.

6. Use cement to fill the gap between the controller and the wall.

7. Remove excess parts of the controller so that it is flush with the wall.



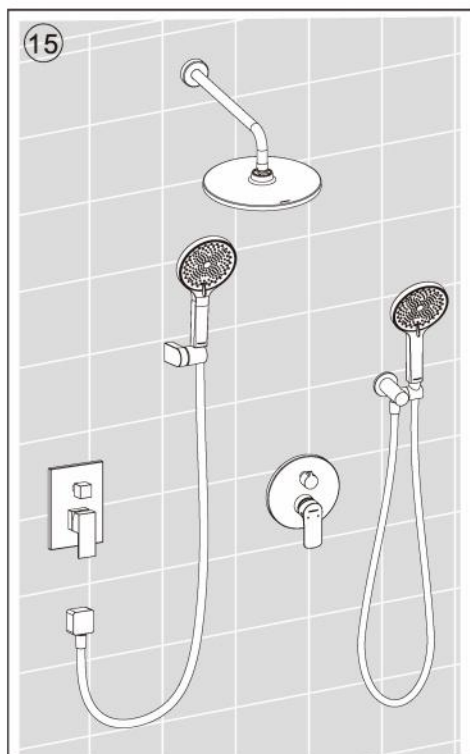
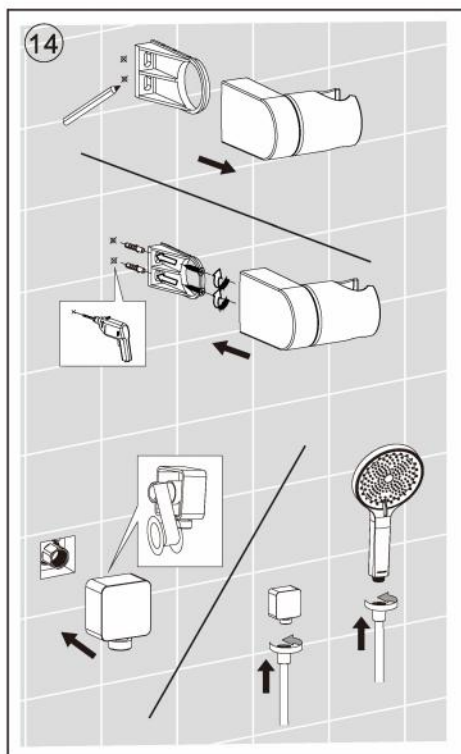
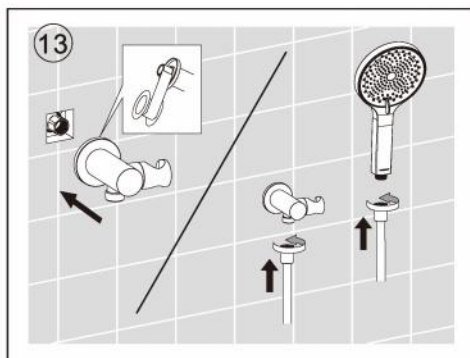
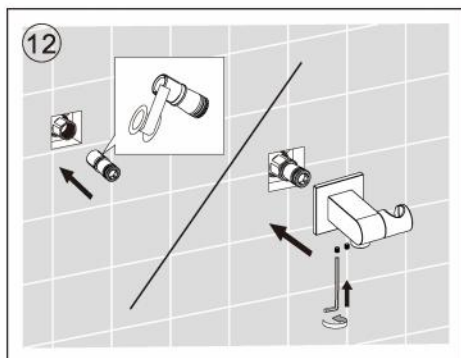
8. Remove the screw protector.

9. Apply waterproof glue and attach the shell.

10. Use an Allen wrench to put the handle on.

11. Connect the water pipes and attach the shower head.

## Shower installation

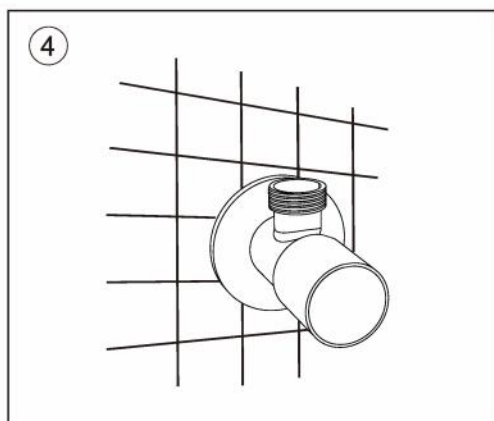
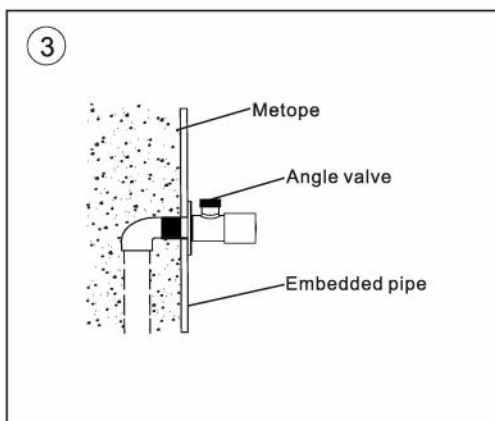
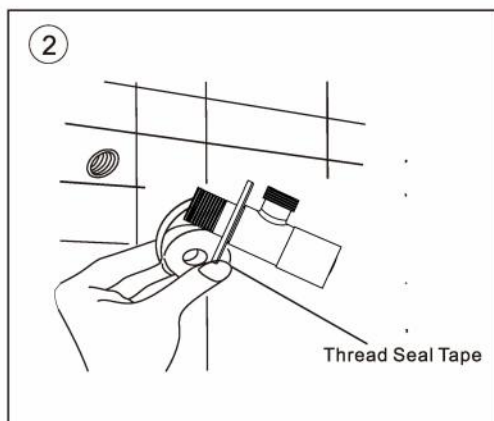
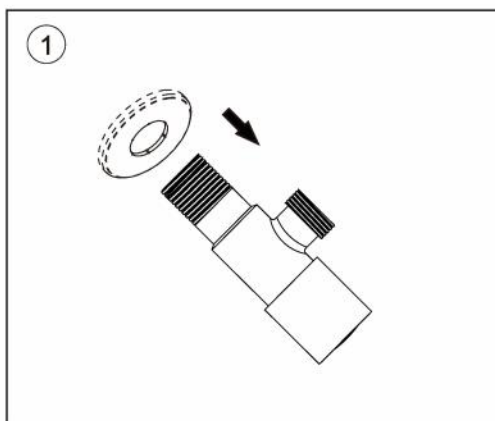
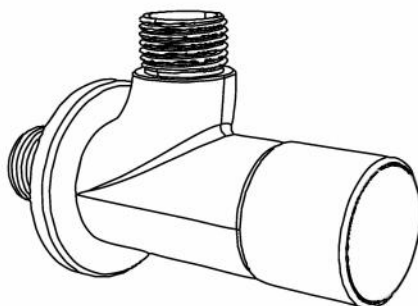


12 13. Install as shown.

14. Remove the fixed base, mark the screw holes on the wall, drill holes and knock in the expansion pellets, fix the base on the wall with screws, and install the shower head; The outlet seat connector is connected with the embedded pipe in the wall with the raw material belt, and the shower hose is connected with the shower seat and the hand shower.

15. Complete the installation.

## Angle valve installation





## Product care

- It is recommended to use special products for chrome surfaces or soapy water to clean the surface.
- Wash off dirt with a soft sponge without rubbing. Dry the surface with a soft cloth.
- Do not use abrasive materials, rough paper or sharp objects.
- Do not use detergents containing acids or solvents or means for removing limescale.

## Warranty conditions

The warranty period for products starts from the date of purchase, which is confirmed by a correctly completed warranty certificate - with a note of the item number, date of sale and the signature of the buyer and the sale or cash register receipt.

The warranty conditions do not include work on installation, connection and adjustment of equipment, as well as advice on operations.

The manufacturer reserves the right to make changes to the construction, design and complete set of the product.

### **Warranty repair and service may be refused in the case of:**

- the use of parts or components of another manufacturer, In this case, the service center is not responsible for product operation;
- pollution, limescale build-up;
- unqualified installation;
- repair or reoperation of the product by persons not authorized to carry out such work;
- incomplete set of the product;
- the use of the product for other purposes;
- normal aging of parts, such as decorative attachments, aerators, sealants, gaskets, etc;
- surface treatment of the product with abrasive or cleansing agents or substances that contain acids
- if the defect is caused by careless handling or improper care;
- absence of warranty documents (warranty certificate, sale or cash register receipt);
- mechanical damage.

### **The warranty is not valid in the following cases:**

- if the Product has been damaged by third parties during transportation, storage, installation or repair, after the transfer of property rights to the Product to the consumer;
- if the Owner has intentionally or unintentionally caused damage to the Product as a result of an improper storage, usage or care (for example, if the Product has been exposed to natural conditions, excessive ultraviolet radiation, thermal shock, chemical and mechanical damage, etc.);
- if the Owner did not follow the installation and care instructions;

•product malfunction is caused by manufacturer-independent reasons,such as change of pressure in water supply,corrosion of public water supply,water pollution,natural phenomena.natural disasters,fire,etc.

When purchasing the Product,the Owner agrees that the limits of liability for damage do not exceed the amount stated in the original invoice for the Product. The manufacturer is not liable for damages that are not covered by this warranty:in particular,liability for the unusable Product, lost profits or commercial opportunity,inconvenience or emotional suffering of the Owner:consequential and indirect losses or penalties related to damage to the Product by third parties.

# FAUCET TROUBLE SHOOTING:

| Problem                             | Possible Cause  | Corrective Action  |
|-------------------------------------|---|--|
| Water does not shut off completely. | 1.0-ring is not seated correctly or worn.<br>2.Cartridge may be defective.                                  | 1.Reseat or replace 0-ring.<br>2.Replace cartridge   |
| Leaks at waterline connection.      | 1.Worn or broken washer.  | 1.Replace washer.  |
| Leaks from handle.                  | 1.Cartridge may come loose.<br>2.Cartridge may be defective.  | 1.Reseat cartridge tight.<br>2.Replace cartridge.  |
| Leaks at hose connection.           | 1.Hose connection is loose.   | 1.Tighten hose.<br>2.Replace hose.   |
| Leaks at shower valve connection.   | 1.Connection may come loose or not sealed completely.<br>2.Defective shower valve inlet or outlet connector | 1.Check connections.<br>2.Replace valve body.  |
| Diverter knob does not work.        | 1.Diverter cartridge may be defective.  | 1.Replace cartridge.   |
| Low flow.                           | 1.Check for water pressure problems.<br>2.Aerator may be dirty or clogged.                                  | 1.Clean or replace the aerator.<br>2.Remove water flow restrictor if available.<br>3.install booster or pump (if applicable) . |



## The warranty period for products

| ACCESSORIES CATEGORY   | WARRANTY PERIOD (FUNCTION, APPEARANCE)              |
|--|---|
| CARTRIDGE  | SHOWER SET (THERMOSTATIC/HOT & COLD) <b>2 YEARS</b> |
|  | BATHTUB FAUCET/POTFILLER <b>2 YEARS</b>             |
|  | BASIN/KITCHEN FAUCET <b>2 YEARS</b>                 |
| SHOWER/KITCHEN FAUCET TUBE   | <b>1 YEAR</b>                                       |
| SHOWER HOSE  | <b>1 YEAR</b>                                       |
| KITCHEN FAUCET SPOUT   | <b>1 YEAR</b>                                       |
| SHOWER HEAD, HAND SHOWER   | <b>1 YEAR</b>                                       |
| SHOWER/KITCHEN/BASIN MIXER BODY<br>(CHROME COLOR)  | <b>2 YEARS</b>                                      |
| SHOWER/KITCHEN/BASIN MIXER BODY<br>(BRUSH NICKEL, MATTE BLACK, BRUSH GOLD,<br>GUN BLACK) | <b>1 YEARS</b>                                      |

\*The specified warranty periods are valid when purchasing products for private use.  
The warranty period is 6 months in the case of use of products in the public and industrial spheres.

20231013

# THANK YOU FOR YOUR CHOICE !





